

**WFO Midland, Texas**

**MONTHLY REPORT OF HYDROLOGIC CONDITIONS**

REPORT FOR:  
MONTH **October** YEAR **2022**

TO: Hydrometeorological Information Center, W/OH2  
NOAA / National Weather Service  
1325 East West Highway, Room 7230  
Silver Spring, MD 20910-3283

SIGNATURE J. DeBerry  
In Charge of HSA

DATE  
**November 15, 2022**

*When no flooding occurs, include miscellaneous river conditions, such as significant rises, record low stages, ice conditions, snow cover, droughts, and hydrologic products issued (NWS Instruction 10-924)*

An X inside this box indicates that no river flooding occurred within this hydrologic service area.

The synoptic pattern began changing to fall during the month of October. A few hydrologic events were noted.

During the first part of the month, thunderstorms produced heavy rainfall again over the Rio Conchos watershed, as well as the Rio Grande. This resulted in the Rio Grande going into minor to major flood beginning October 10<sup>th</sup>-11<sup>th</sup>, from Presidio downstream through Boquillas.

On October 10<sup>th</sup>, thunderstorms produced heavy rainfall in Fort Stockton in Pecos County, flooding schools and hospitals in town. Several water rescues were needed.

No other notable hydrologic events were reported for the month.

Precipitation amounts from area ASOS's:

City	ASOS ID	October	September
Carlsbad, NM	KCNM	1.81"	0.39"
Fort Stockton	KFST	4.56"	1.30"
Guadalupe Pass	KGDP	2.38"	1.82"
Midland Int'l	KMAF	1.51"	0.64"
Odessa	KODO	1.45"	0.19"
Terrell County	K6R6	3.17"	0.86"
Wink	KINK	1.02"	1.63"

Precipitation amounts from area AWOS's:

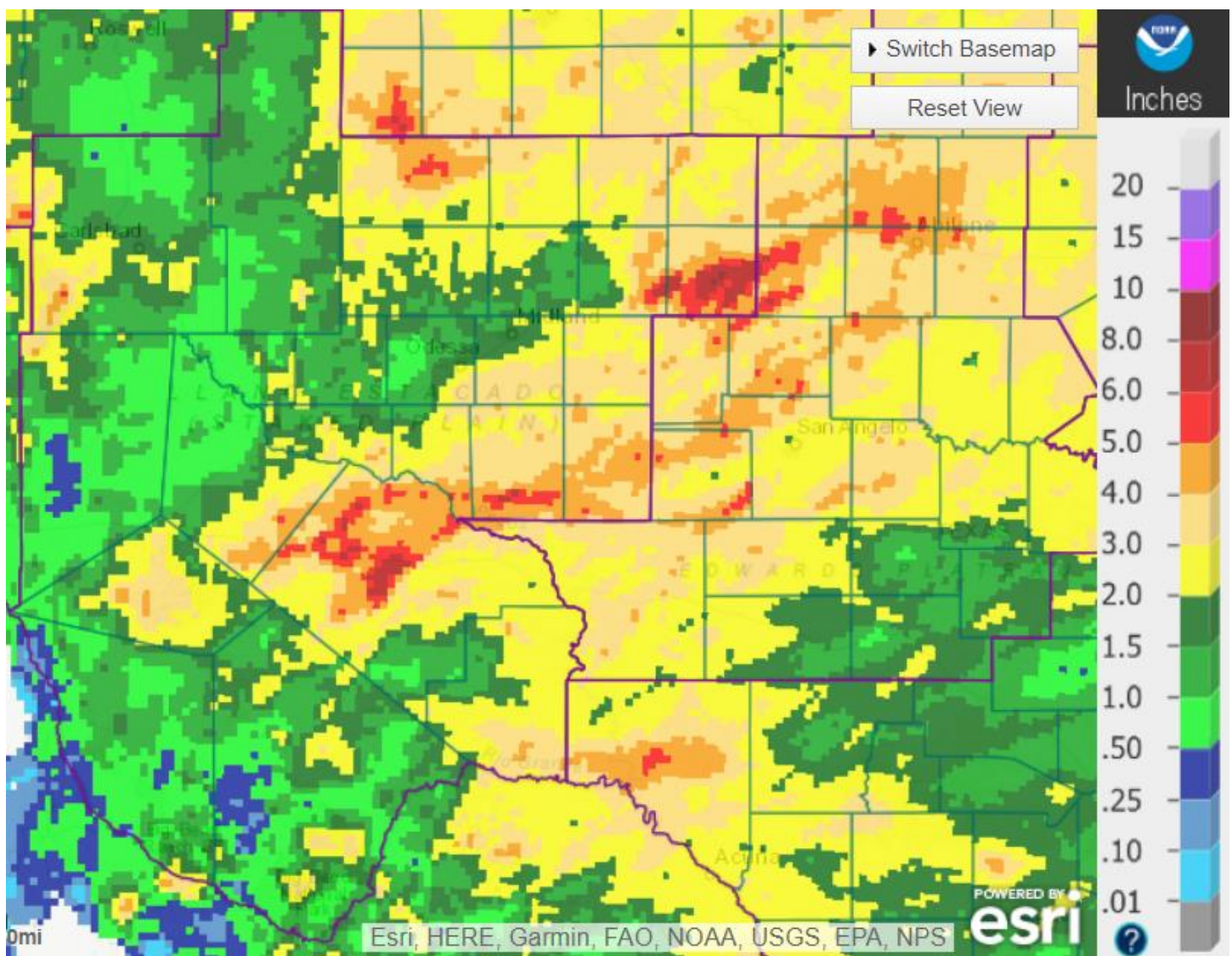
City	AWOS ID	October	September
Alpine	KE38	1.75"	1.75"
Andrews County	KE11	1.86"	0.49"
Artesia, NM	KATS	1.87"	0.22'
Big Spring	KBGP	1.20"	0.41"
Culberson County	KVHN	1.33"	0.40"
Gaines County	KGNC	3.09"	0.05"

Hobbs, NM	KHOB	1.22"	0.02"
Lamesa Municipal	KLUV	1.67"	1.11"
Marfa	KMRF	1.47"	0.96"
Midland Airpark	KMDD	0.27"	0.71"
Pecos County	KPEQ	1.36"	0.27"
Presidio County	KPRS	1.37"	0.13"
Reagan County	KE41	2.07"	0.37"
Snyder	KSNK	3.70"	0.39"

Some other locations in the HSA that received notable amounts of precipitation for October were:

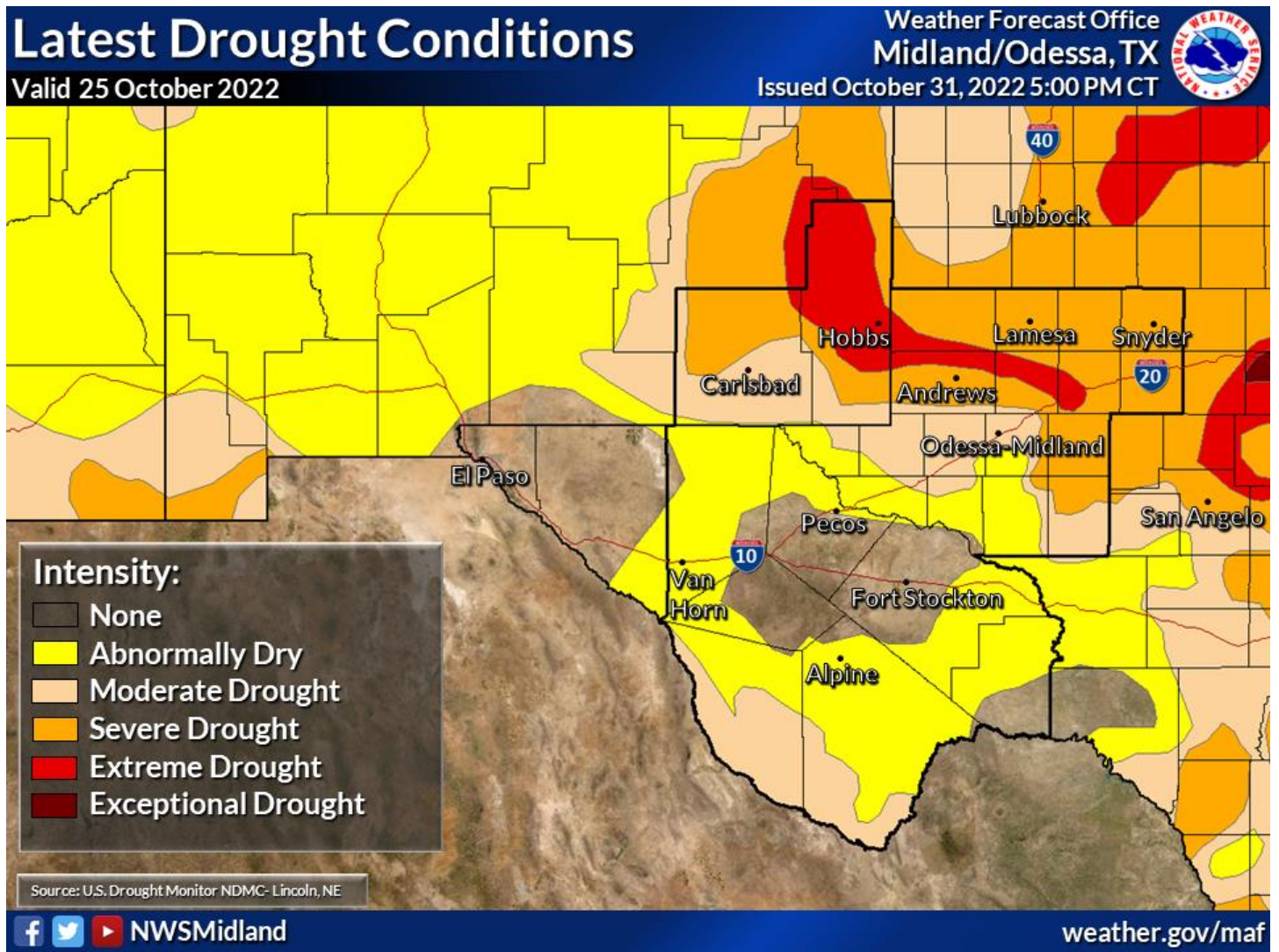
Snyder, Scurry County	4.44"
Pine Springs, Culberson County	5.02"
Fort Stockton, Pecos County	5.04"
McCamey, Upton County	5.31"

91 locations reported rainfall for the month of October, for an HSA average of 2.31".



October Precipitation

Normal October precipitation for Midland International Air and Space Port is 1.21". Total precipitation for 2022 ending November 1<sup>st</sup> was 8.44", or 3.76" below normal.



Reservoir levels across the HSA averaged 49.2% of conservation capacity as of November 1<sup>st</sup>:

Reservoir (County, State)	November 1 Conserv Cap (%)	October 1 Conserv Cap (%)
JB Thomas (Scurry, TX)	26.0	27.0
Colorado City (Mitchell, TX)	57.3	56.6
Champion Creek (Mitchell, TX)	61.2	58.4
Natural Dam Salt Lake (Howard, TX)	48.4	48.4
Moss Creek (Howard, TX)	69.0	60.0
Brantley (Eddy, NM)	63.0	60.0
Avalon (Eddy, NM)	8.0	36.0
Red Bluff (Reeves, TX)	61.0	65.6

**Non-Routine Products Issued for October:**

Flash Flood Watches (FFA): 11  
Flash Flood Warnings (FFW): 5  
Flash Flood Statements (FFS): 4  
Flood Advisories/Statements (FLS): 27  
Flood Warnings (FLW): 6

**Total Non-Routine Products Issued: 53**

**cc: email: COE ABQ, HIC, IBWC ELP, IBWC PRD, LCRA, NWS ABQ, NWS EPZ, NWS LBB,  
NWS MAF, NWS SJT, SRH, TAMU, TCEQ, USGS CNM, USGS SJT, WGRFC**